



Agilent EZChrom Elite Software
for Petrochemical and Chemical Processing

One data system

for all the instruments in your lab.

Our measure is your success.



EZChrom Elite Software

Bring your lab together under one data system.

Whether your lab is running a single instrument or several hundred—one vendor or many—EZChrom Elite software brings everything together. With support for 330+ chromatography modules from more than 25 manufacturers, EZChrom Elite allows you to operate all of your LC and GC instruments under a single, easy-to-use interface.

Simplify

When you need “to do more with less”—and who doesn’t these days?—you don’t need the extra complexity of a patchwork of chromatography data systems.

Replace all those chromatography data system packages with EZChrom Elite, and you’ll not only reduce the number of software packages you need to support, but you’ll also reduce maintenance time and costs, training time and operator errors and confusion.

Seamless LIMS integration

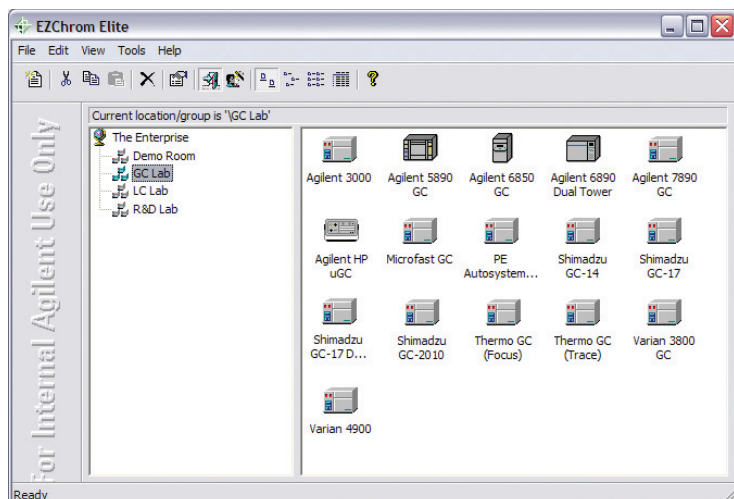
EZChrom Elite enables file-to-file transfer of data to and from your LIMS system, eliminating the time and risk involved in manual data transfer. As a standard chromatography data system in the hydrocarbon processing industry, EZChrom Elite is supported by third party LIMS providers and LIMS-CDS interface vendors.

Fits right into any lab and any workflow

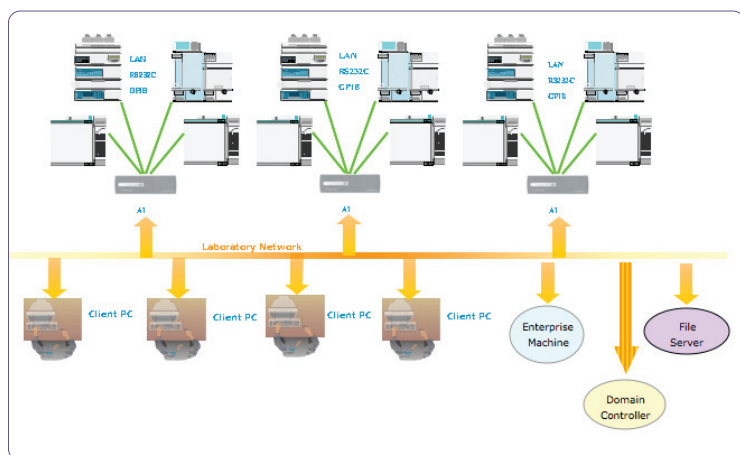
EZChrom Elite can be easily tailored to your lab’s unique needs—wherever your lab happens to be. Available in localized languages (English, Japanese, Chinese), the software supports both standard and custom user interfaces, allowing you to configure the look and feel for your particular workflow.

Easier reporting, too

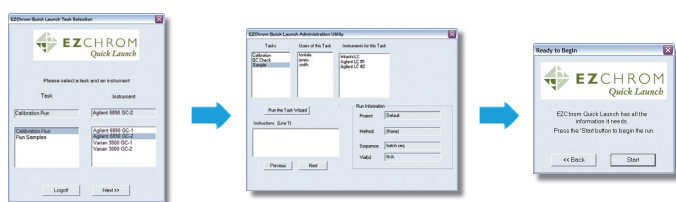
EZChrom Elite provides the full suite of standard report formats that you would expect from a leading chromatography data system. It also lets you create custom method and sequence reports exactly formatted to your needs—automatically from the data system. There is no need to transpose data from an instrument report to a customer-requested report format.



Today's most comprehensive multi-vendor chromatography data system. EZChrom Elite software lets you run LC and GC instruments from more than 25 different vendors under a single data system and a consistent user interface.



Ready to grow. EZChrom Elite can expand as your lab expands—from a single instrument chromatography data system, to a workstation controlling multiple instruments, to a full client-server network system controlling multiple instruments in multiple locations.



How easy would you like things to be? EZChrom Quick Launch gives you a simplified user interface; just select a task, select an instrument and go. To make things even simpler, you can use the EZChrom Elite Automation Toolbox to make the interface as simple as a single "Run" button.

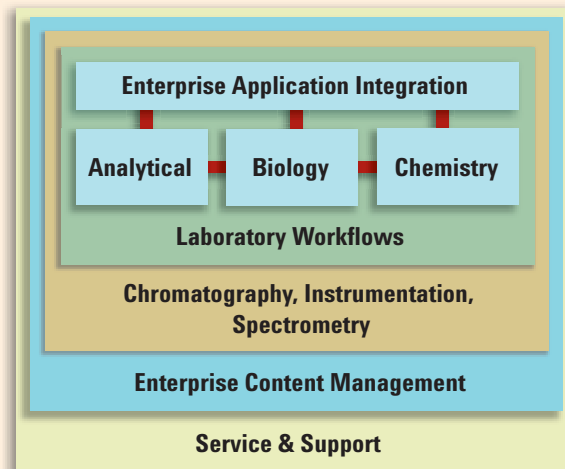
#	Test	Result	Action
1	System Suitability	Fail	Abort
2	Calibration	Pass	Reinject
	QC	Fail	Run User Program
	System Suitability		Run Shutdown
	Hardware Status		Alarm
	Conc. Limit		Goto
	Baseline Check		Restart Sys Suit

EZChrom Elite Smart Sequence prevents unnecessary downtime. Have you ever started a long GC run only to return and find that the entire sample sequence failed due to a calibration error, a too-noisy baseline or failed standard? EZChrom Elite's result-dependent Smart Sequence avoids time-wasting delays by giving you the option to automatically re-inject, branch in sequence, pause/abort, trigger an alarm or notify you via pager or email when sequence errors occur.

To learn more about Agilent EZChrom Elite software, visit www.agilent.com/chem/ezchrom

A member of the Agilent laboratory software family

As part of Agilent's comprehensive laboratory software portfolio, EZChrom Elite lets you harness the full potential of your Agilent GC or LC instruments, including add-on Agilent productivity features, such as Retention Time Locking and Capillary Flow Technology.



For more information

Learn more:

www.agilent.com/chem/ezchrom

Buy online:

www.agilent.com/chem/store

Find an Agilent customer center in your country:

www.agilent.com/chem/contactus

U.S. and Canada

1-800-227-9770

agilent_inquiries@agilent.com

Europe

info_agilent@agilent.com

Asia Pacific

adinquiry_aplsca@agilent.com

Research use only. Information, descriptions and specifications in this publication are subject to change without notice. Agilent Technologies shall not be liable for errors contained herein or for incidental or consequential damages in connection with the furnishing, performance or use of this material.

© Agilent Technologies, Inc. 2009
Printed in USA January 25, 2009
5990-3512EN



Agilent Technologies